



Beechcroft Avenue, Golders Green, NW11

Weekly Rental Of £692



800 finchley road, hampstead garden suburb, london, nw11 7tj

telephone 020 8458 5000 facsimile 020 8209 2068

email sales@litchfields.com web litchfields.com

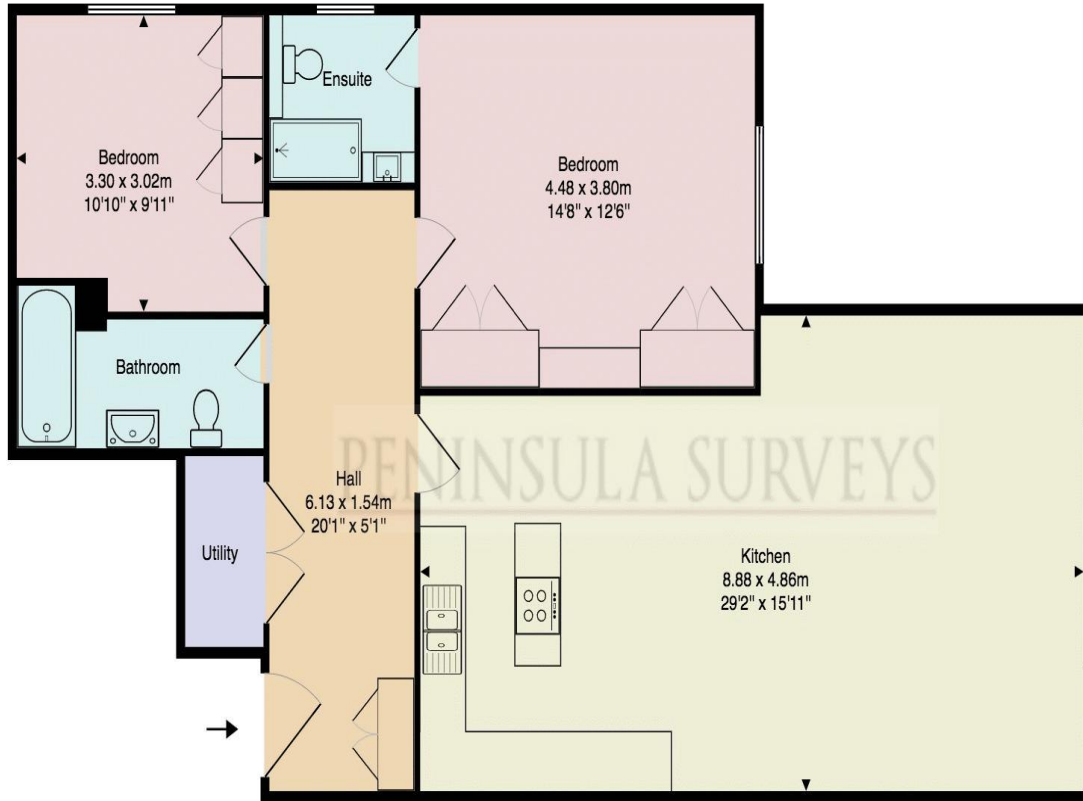
offices also in crouch end & highgate

Stunning two bed, 2 bath apartment on the 1st floor of this recently built purpose built block with lift. Featuring engineered wood floors and oak wood doors, with sumptuous and oversized stylish bathrooms and a luxury Neil Lerner Kitchen. entrance hall, large open plan reception with fully integrated kitchen and quartz worktops, fitted master bedroom with lit wall insets over the bed, further double fitted bedroom. Secure underground parking space x 1 car. Golders Green station and extensive shopping facilities is a short walk away. This lifestyle home is offered unfurnished and is a must see!

Newly Constructed Luxury Development | 2 Double Bed Luxury 1st Floor Apartment with Lift
| 2 sumptuous oversized bathrooms (1 en-suite) | Open Plan Reception Room | Stunning Neil Lerner Kitchen with quartz worktops and integrated appliances | Engineered wood floors and Oak Wood Doors | Short Walk to Golders Green Tube & Extensive shopping amenities | Underground parking x 1 Car | Video Entry | Unfurnished



Flat 6 Beechcroft Avenue



First Floor



Gross Internal Area: 90.1 m² ... 970 ft²

Dimensions are approximate; for display purposes only.
Created in accordance with the RICS Code of Measuring Practice.
(c) Peninsula Surveys Ltd.

PENINSULA SURVEYS

Whilst every effort is made to ensure these details are accurate, all measurements given are approximate and for guidance only. We are unable to comment on the structure of the building or services and any investigations should be carried out by a qualified surveyor. We strongly advise you to ensure that all legal aspects are fully investigated by your solicitor prior to a purchase. We have not applied tests to any appliances or equipment and therefore cannot verify these are in good working order. We understand from the vendor that the fixtures and fittings listed are to be included in the sale price but these may be subject to negotiation.

